



Docking Station™



U.S. Patent #6,442,639
International Patent #WO0182063

PRODUCT SPECIFICATIONS

COMPATIBLE MONITORS SUPPORTED:

MX6 iBrid™ (all versions), **iTX** Ver 2.2 or higher, **T82** Ver 2.2 or higher
GasBadge® Pro (all versions), **GasBadge® Plus** (all versions),
VX500 Ver 2.6 or higher,

CASE:

Impact-resistant composite with radio frequency interference (RFI) protection

DIMENSIONS:

9.75" h x 6.40" w x 9.00" d (24.8 cm x 16.3 cm x 22.9 cm)

INPUT:

115/230 VAC, 50/60 Hz. 12 VDC

OPERATING TEMPERATURE:

32° F to +122°F (0°C to +50°C)

COMMUNICATION:

10bT Ethernet support, RJ-45 Category 5 connection or 802.11b wireless Compact Flash

DISPLAY:

128 x 64 Dot Matrix LCD – Multilingual modes allow selections in English, Spanish, French and German languages

PUMP FLOW RATE:

500 ml/minute @ 80" H₂O

GAS INPUTS:

3 separate inputs on each IDS. Ability to share up to 14 discrete gases for calibration when IDSs are clustered together.

DS2 COMPUTER REQUIREMENTS (min):

For 1-8 IDS units: Dedicated Pentium III, 800 MHz, 256 MB RAM, 4GB available disk space, Windows® 2000 Professional, Windows® XP Professional operating system, one Cat5E Ethernet network adapter, fixed IP address

For 9-100 IDS units: Dedicated Pentium III, 800 MHz, 256 MB RAM, 4GB available disk space, Windows® 2000 Standard Server, Windows® 2003 Server operating system, one Cat5E Ethernet network adapter, fixed IP address

The DS2 Docking Station™ provides the ultimate flexibility for managing your gas monitors wherever you use them. Two way wireless and/or ethernet connectivity enables you to link up to 100 stand-alone Instrument Docking Stations (IDSs) from remote locations anywhere in your facility and relay the data back to one central database for total instrument management. A graphical user interface tool allows an administrator to view operations on each Docking Station from a network computer, making it easy to track instruments, print reports, set events and change parameters for any location. The DS2 gives you all of the benefits of consistent automated calibration, record keeping, battery recharging, and instrument diagnostics for your monitors to limit your liabilities and safety hazards.

Each individual IDS features a multilingual display, three status LEDs, a keypad and an audible alarm to provide important instrument details at a single glance. The DS2, which can be easily grouped into 'clusters' of up to 5 units to share calibration gas, also offers optional iGas® capability to automatically identify calibration gas cylinder concentrations, lot numbers, and expiration dates on the system. Whether you manage one gas monitor or an entire fleet, the DS2 provides superior cost-savings and flexibility.

- Automates instrument calibration, record-keeping, diagnostics and recharging
- Stand-alone Instrument Docking Stations (IDS)
- Link up to 100 IDSs
- Dock hundreds of instruments
- Multilingual display
- One centralized database

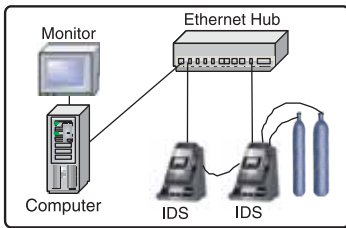


**INDUSTRIAL SCIENTIFIC
CORPORATION**



Docking Station™

SMALL INSTALLATION SCENARIO



SINGLE-LOCATION COMPANY

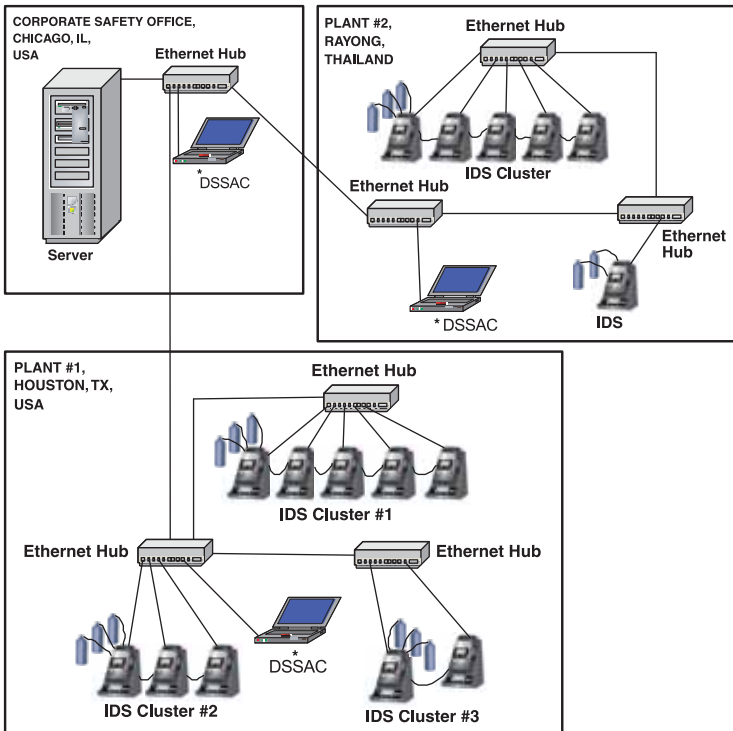
Illustrates one DS2 installation on a stand-alone Ethernet, with 2 IDSs in a cluster sharing 2 cylinders of calibration gas.

Instrument data is available at the local level.

ORDERING INFORMATION

PART#	DESCRIPTION
18106724-ABC+	DS2 Instrument Docking Station (IDS) for MX6 iBrid™
18105551-ABC+	DS2 Instrument Docking Station (IDS) for iTX
18106302-ABC+	DS2 Instrument Docking Station (IDS) for GasBadge® Pro
18107698-ABC+	DS2 Instrument Docking Station (IDS) for GasBadge® Plus
18105544-ABC+	DS2 Instrument Docking Station (IDS) for T82
18105569-ABC+	DS2 Instrument Docking Station (IDS) for VX500
18106054-FP	iTX/DS2 Turnkey System w/ Flat Panel Monitor++
18106543-1	iTX/DS2 Laptop Turnkey System++
18106543-2	VX500/DS2 Laptop Turnkey System++
18106543-3	T82/DS2 Laptop Turnkey System++
18106543-4	VX500/DS2 Laptop Turnkey System++
18106543-5	MX6/DS2 Laptop Turnkey System++
17113978	DS2 PC with Windows® Server OS+++
18105684	iGas® Reader
17111840	Wireless Network Communications Card
17113630	UPS, 700VA, 450W
18105841	Demand Flow Regulator w/ iGas® Pressure Switch (for 58L, 103L and 34L aluminum cylinders)
18105866	Demand Flow Regulator, 600 CGA w/ iGas Pressure Switch (for 34L steel cylinders)
18105833	Demand Flow Regulator, 590 CGA w/ iGas Pressure Switch (for 552L cylinders)
18105858	Demand Flow Regulator, 330 CGA w/ iGas Pressure Switch (for 650L cylinders)
18102509	Demand Flow Regulator, 5/8 UNF (for 58L, 103L and 34L aluminum cylinders)
18103564	Demand Flow Regulator, 600 CGA (for 34L steel cylinders)
18103549	Demand Flow Regulator, 590 CGA (for 552L cylinders)
18103556	Demand Flow Regulator, 330 CGA (for 650L cylinders)
18105924	5-Port Gas Regulator Manifold Clamp
18105932	6-Port Gas Regulator Manifold
17113887	Ethernet Cable, 5' (Cat5E network cable)
17113895	Ethernet Cable, 10' (Cat5E network cable)
17113903	Ethernet Cable, 25' (Cat5E network cable)
17113911	Ethernet Crossover Cable, 5' (Cat5E network cable)
17113929	4-Port Ethernet Router
17113937	4-Port Ethernet Wireless Router
17113945	5-Port Ethernet Hub
17113952	16-Port Ethernet Hub
17113960	24-Port Ethernet Hub

LARGE INSTALLATION SCENARIO



MULTI-LOCATION COMPANY

Illustrates multiple IDS cluster installations at multiple sites all tied together on a common company Ethernet, sharing a common database. Each cluster of IDSs share calibration gas.

Instrument data can be accessed at the plant level as well as by the corporate safety office.

+ Ordering Information

A = Wireless Option (currently unavailable) 0 - none

B = number of iGas Readers

C = Power Cord Option 0 - US 1 - UK 2 - EU 3 - AUS 4 - ITA 5 - DEN 6 - SWZ

++ Includes (1) DS2, Computer (installed software: Windows® XP Professional, DSS and DSSAC), monitor, keyboard, mouse, 5-port Ethernet hub and cables.

+++ Includes keyboard and mouse. Monitor not included. DS2 not included.

**INDUSTRIAL SCIENTIFIC
CORPORATION**

